

Figure 5.6 The human skeleton (anterior view).

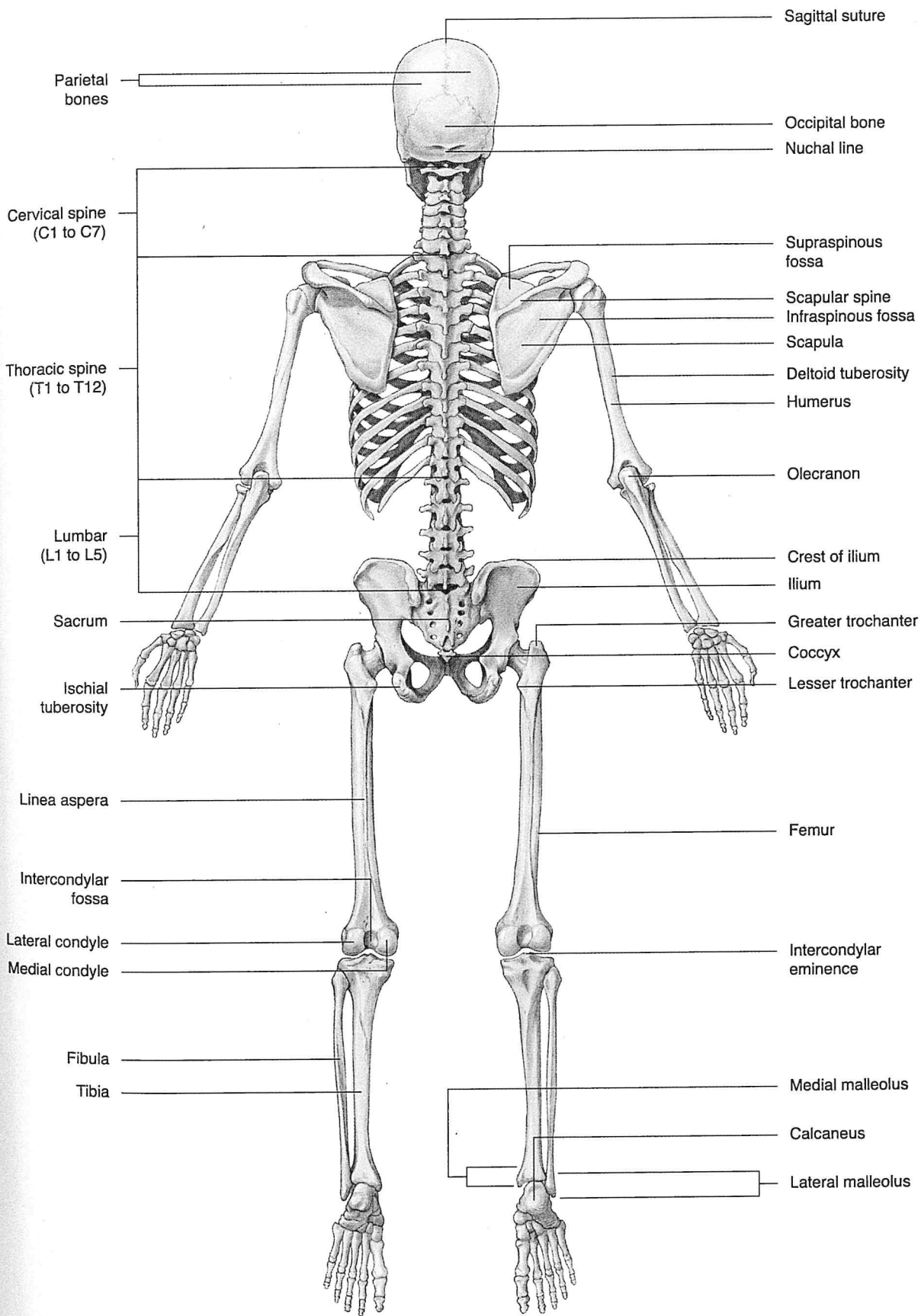


Figure 5.7 The human skeleton (posterior view).

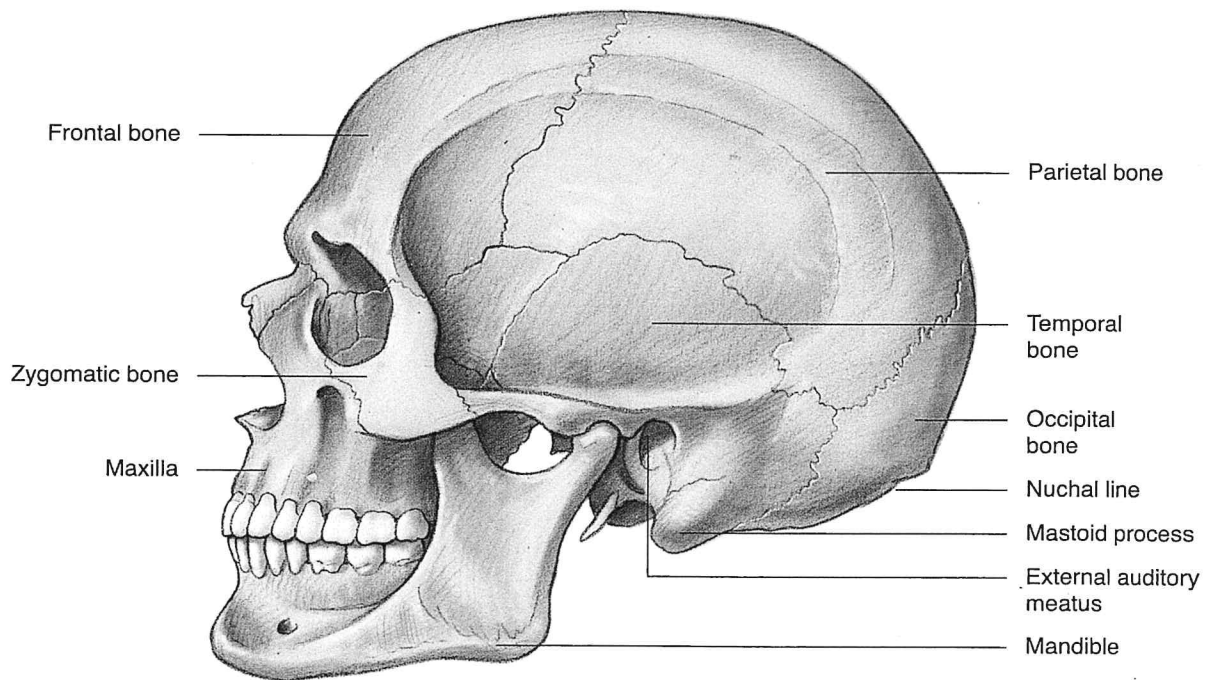
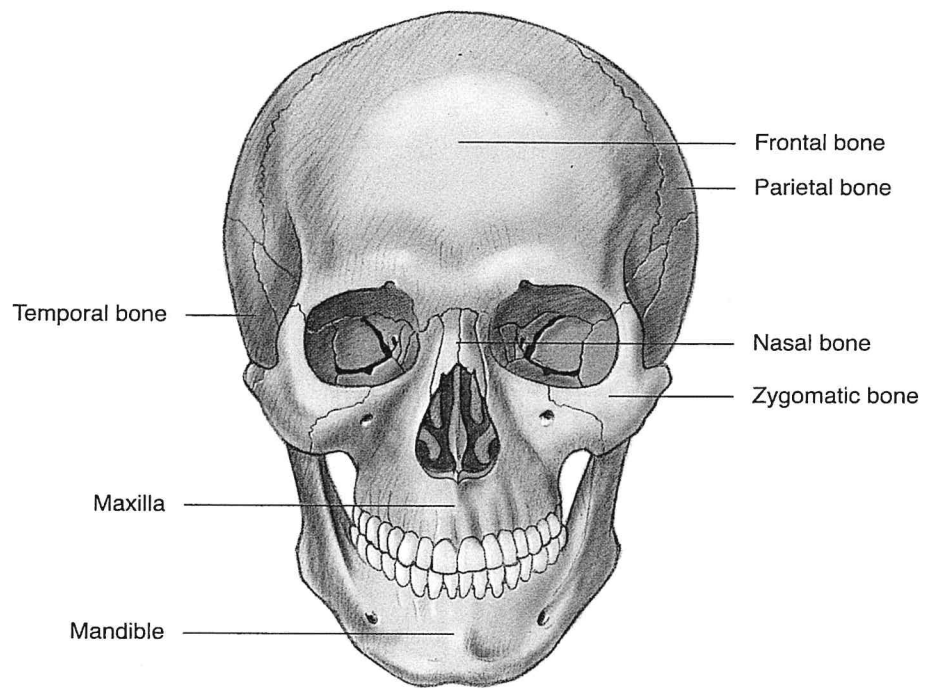


Figure 5.8 and Figure 5.9 Bones of the skull, anterior and lateral views.

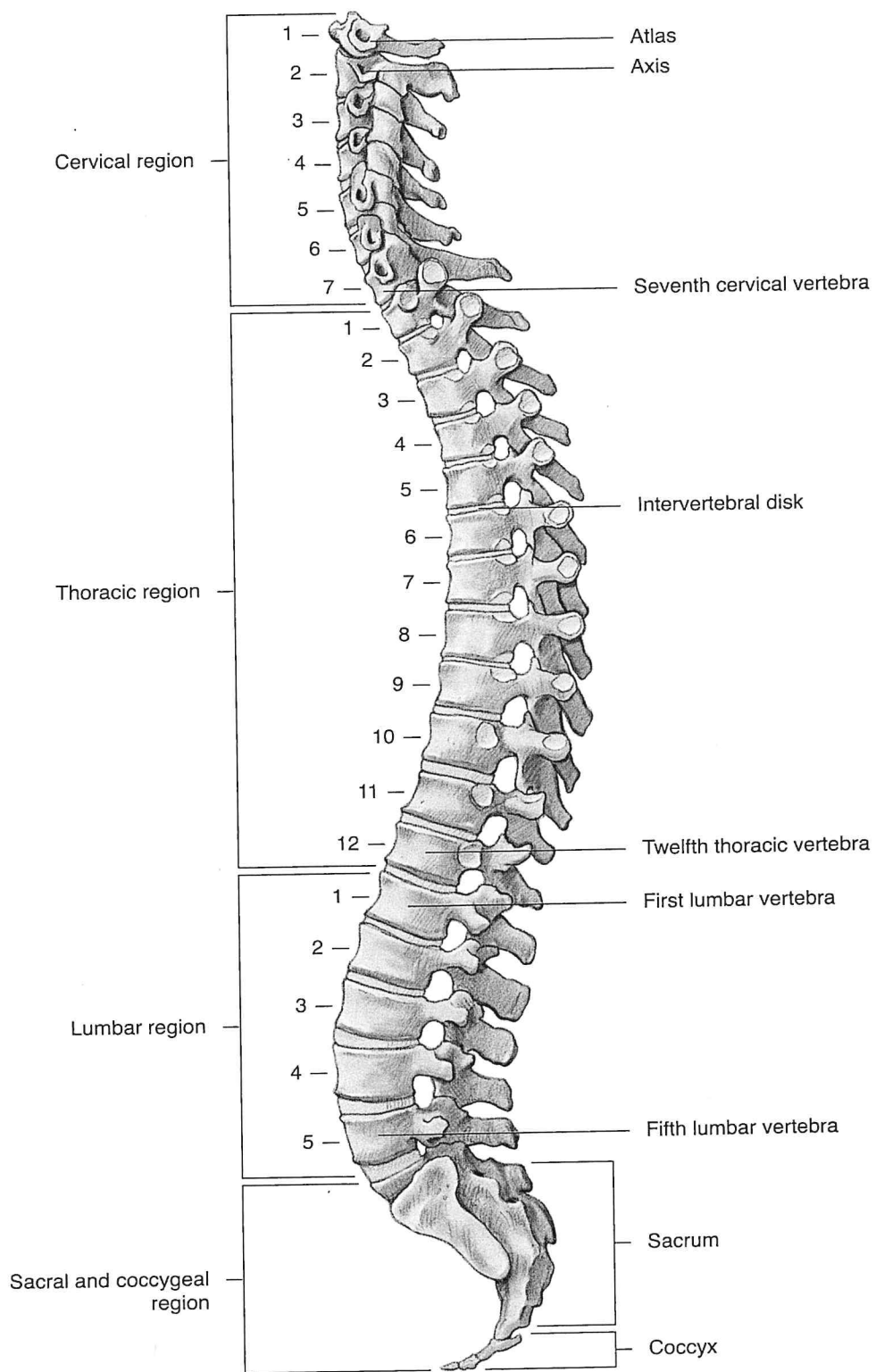
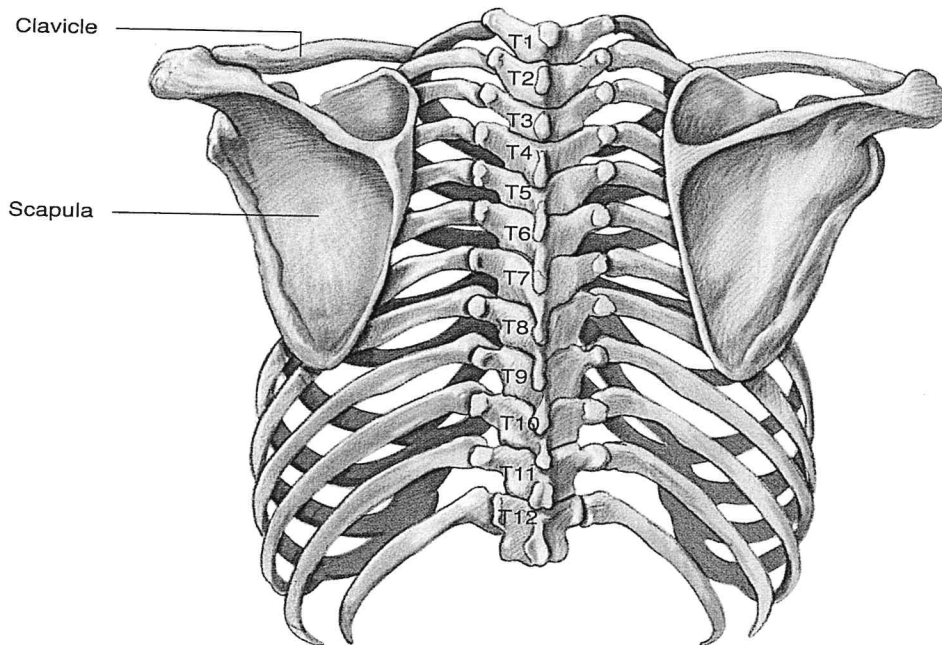
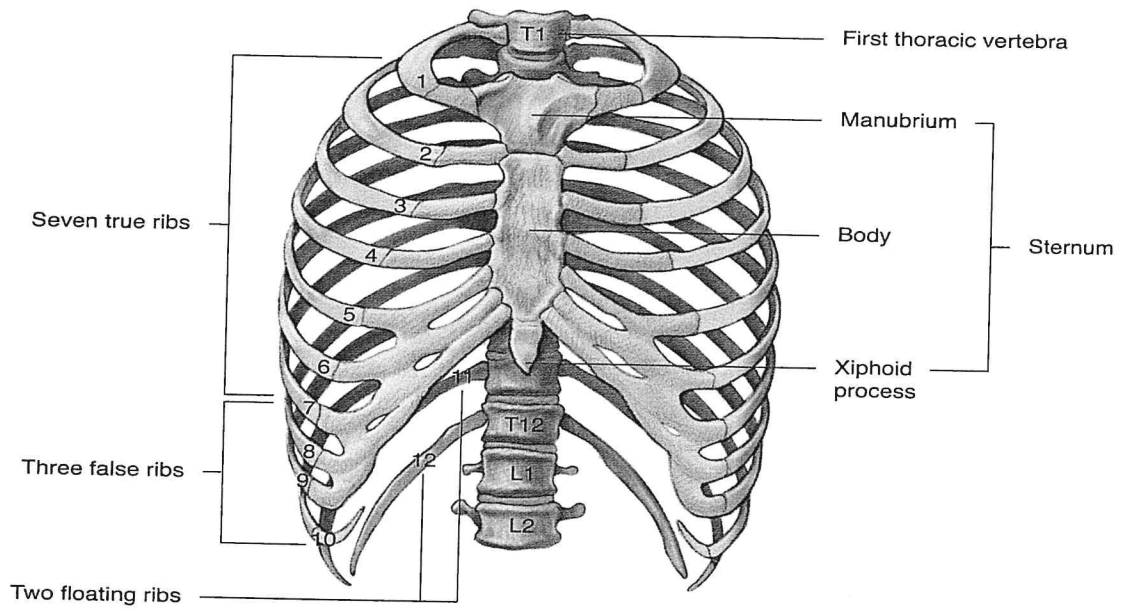


Figure 5.10 The vertebral column, lateral view.



Figures 5.11 and Figure 5.12 The thoracic cage, anterior and posterior views.

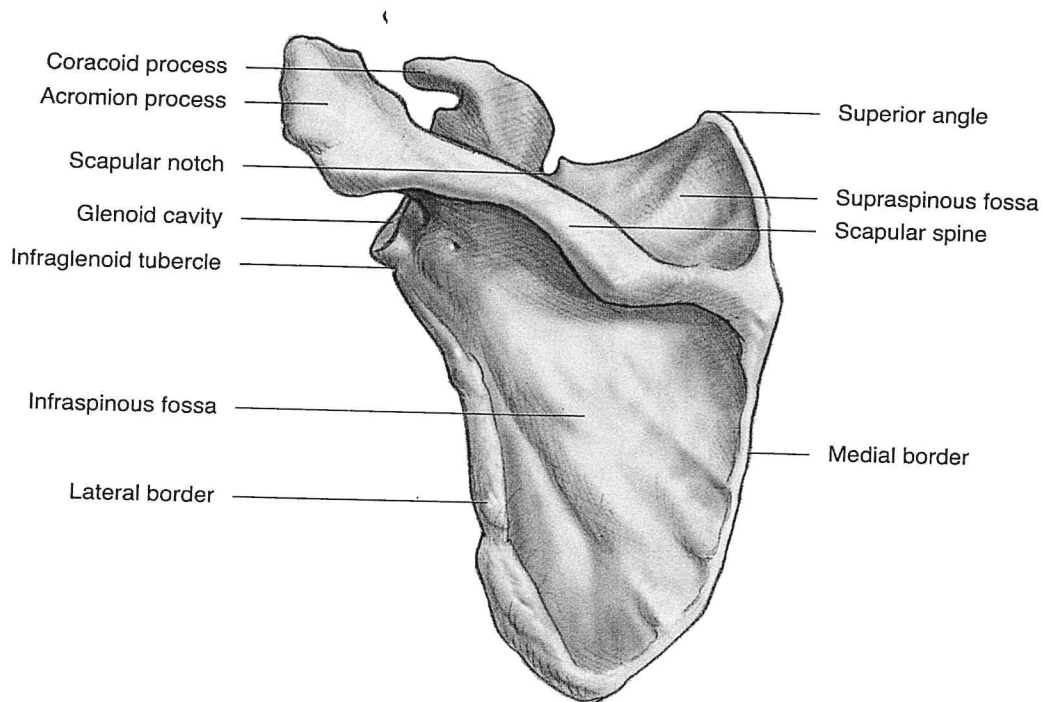
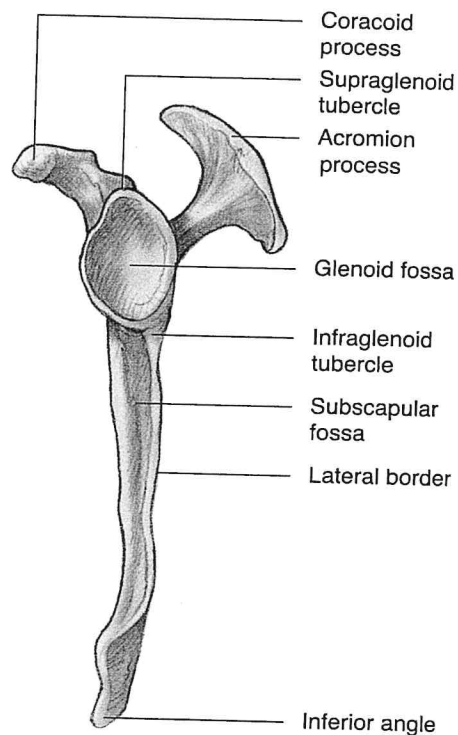
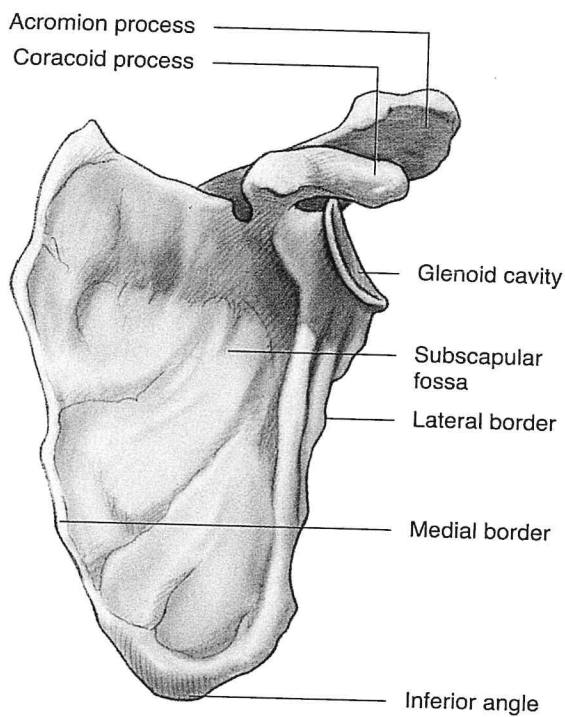


Figure 5.13 Left scapula (top left), anterior view. Figure 5.14 Left scapula (top right), lateral view.
Figure 5.15 Left scapula (bottom), posterior view.

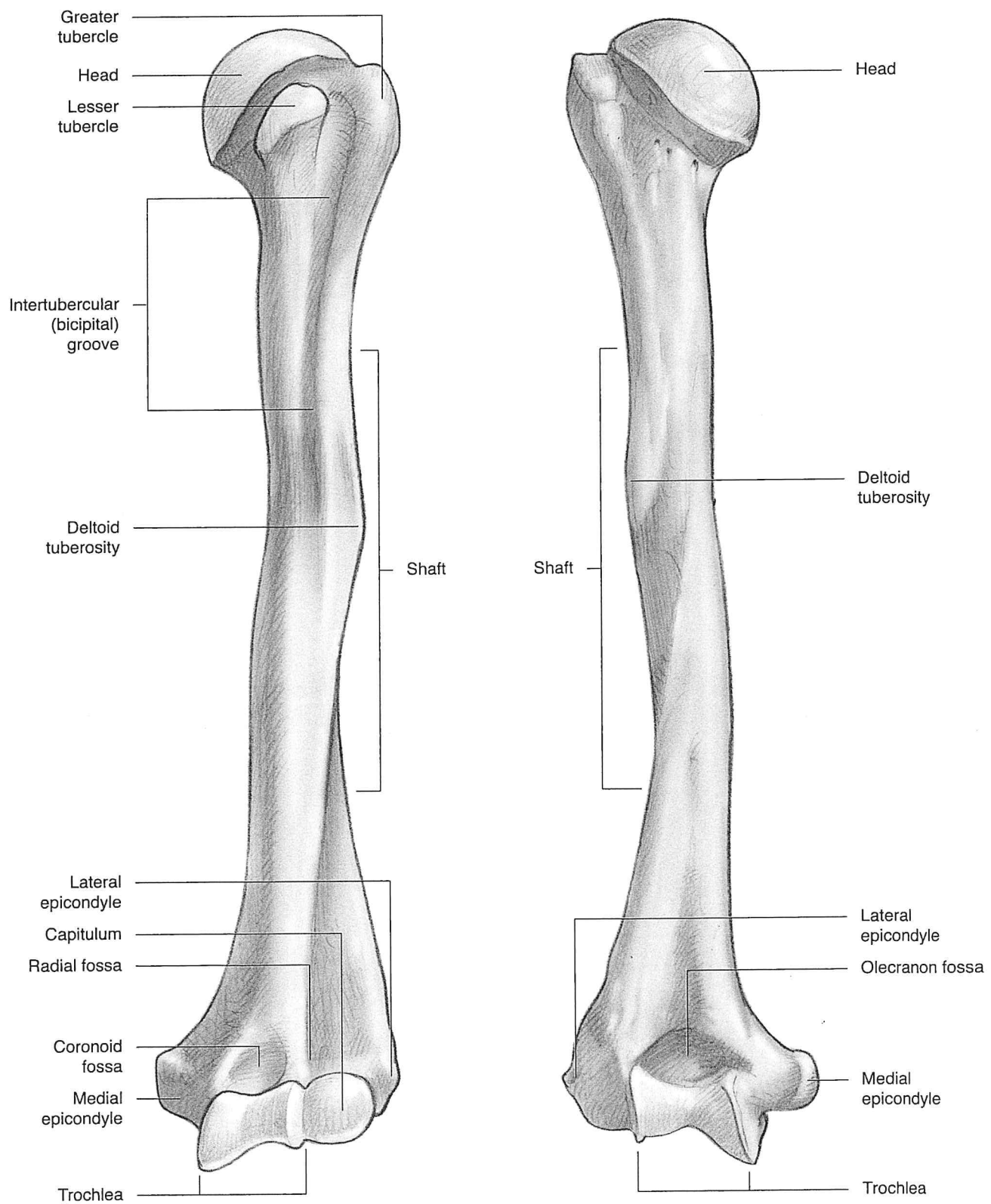


Figure 5.16 and Figure 5.17 Left humerus, anterior and posterior views.

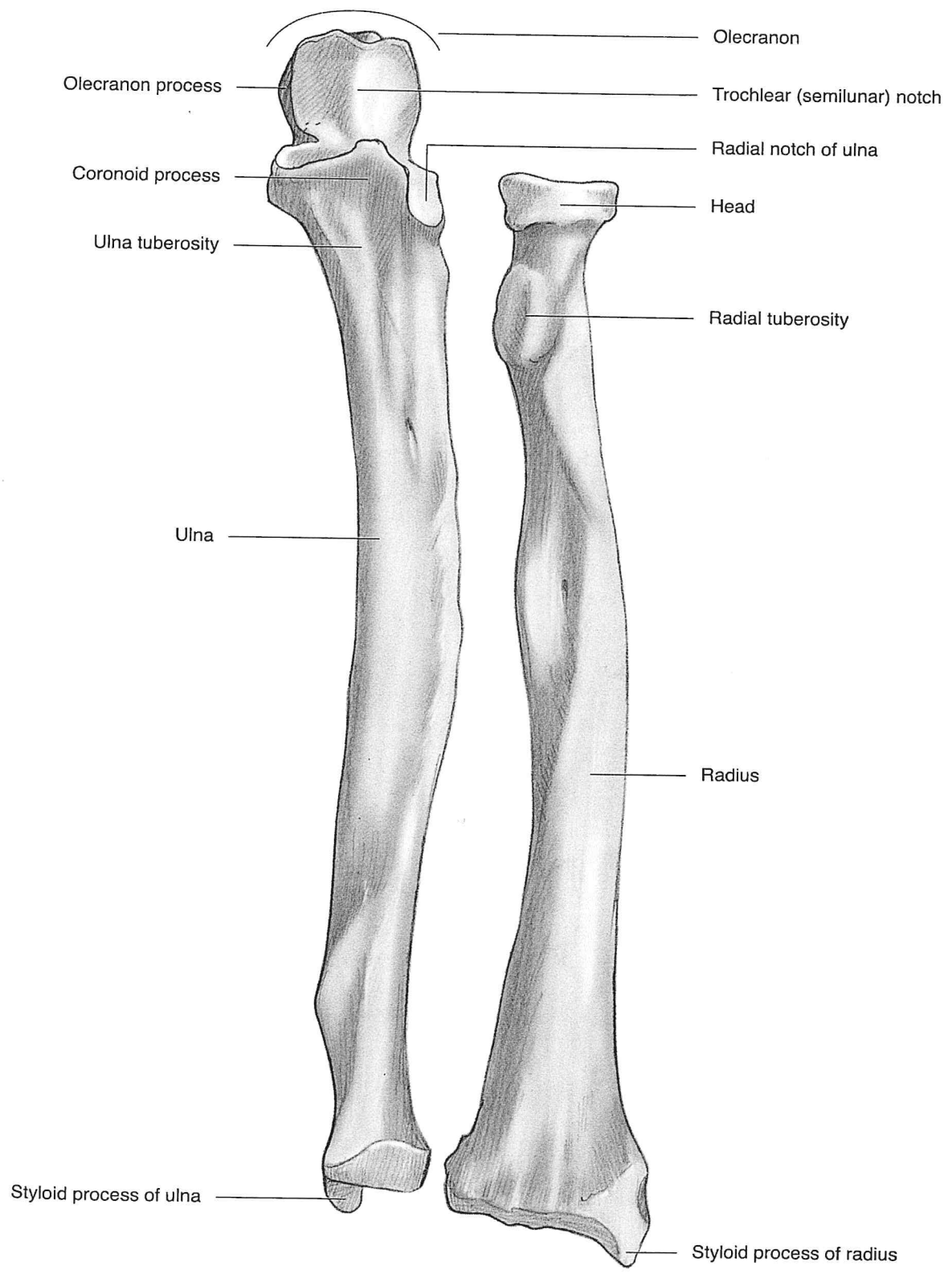


Figure 5.18 and Figure 5.19 Left ulna and radius, anterior view.

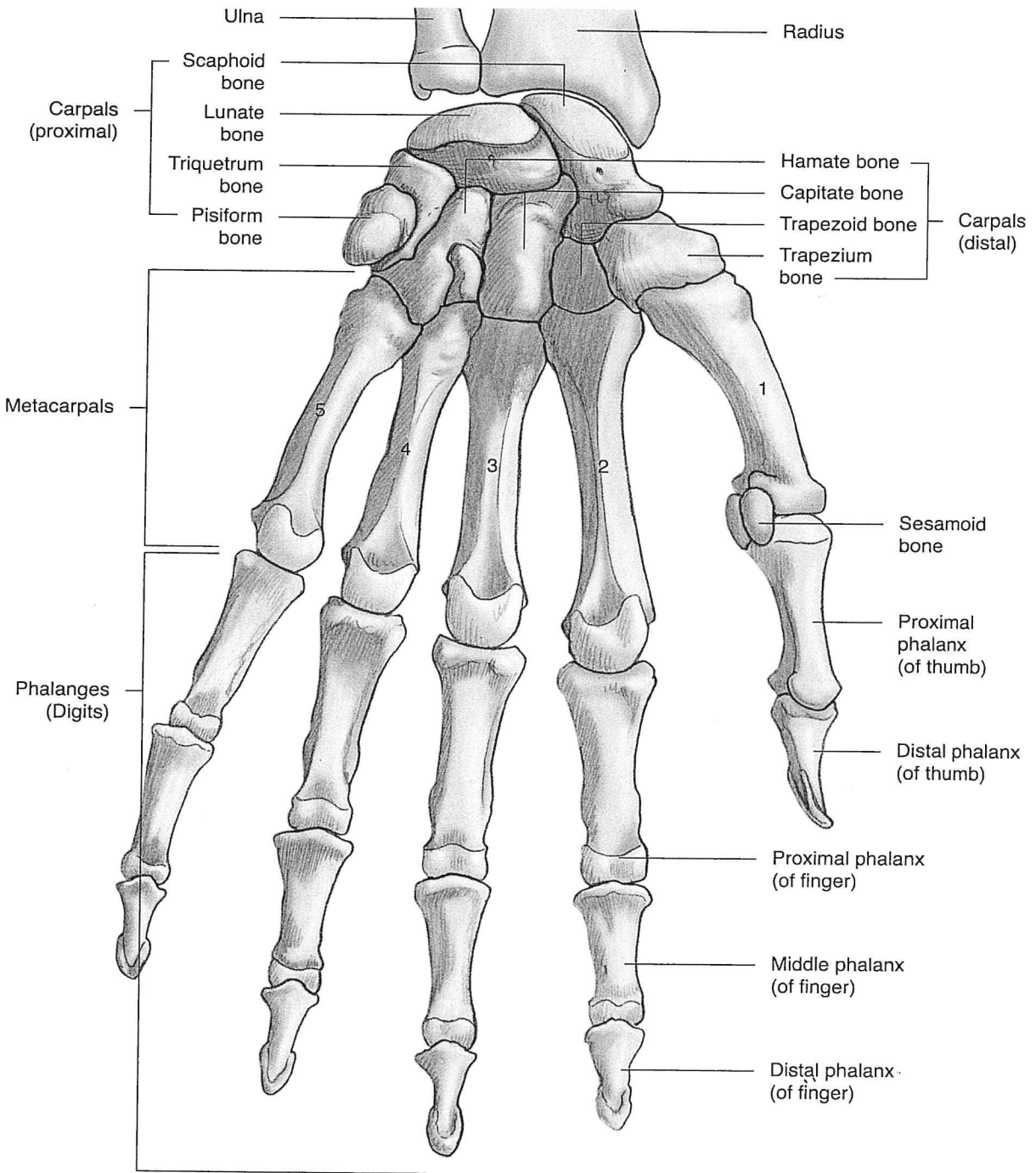


Figure 5.20 Left hand, anterior view.

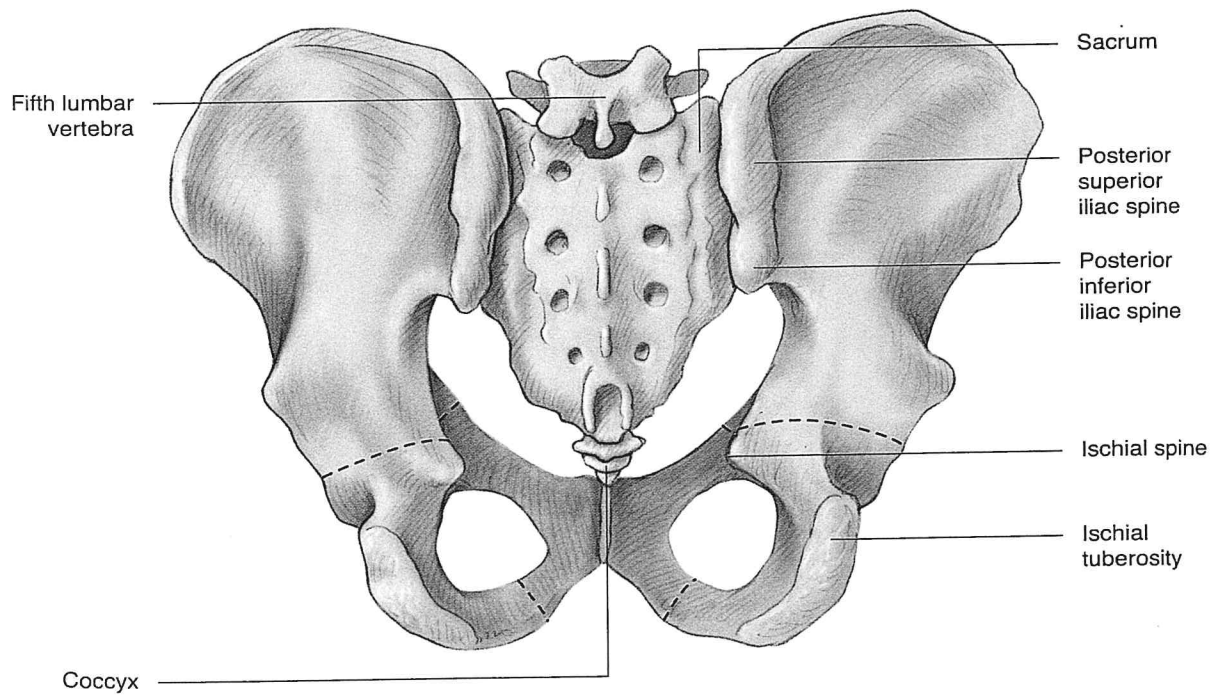
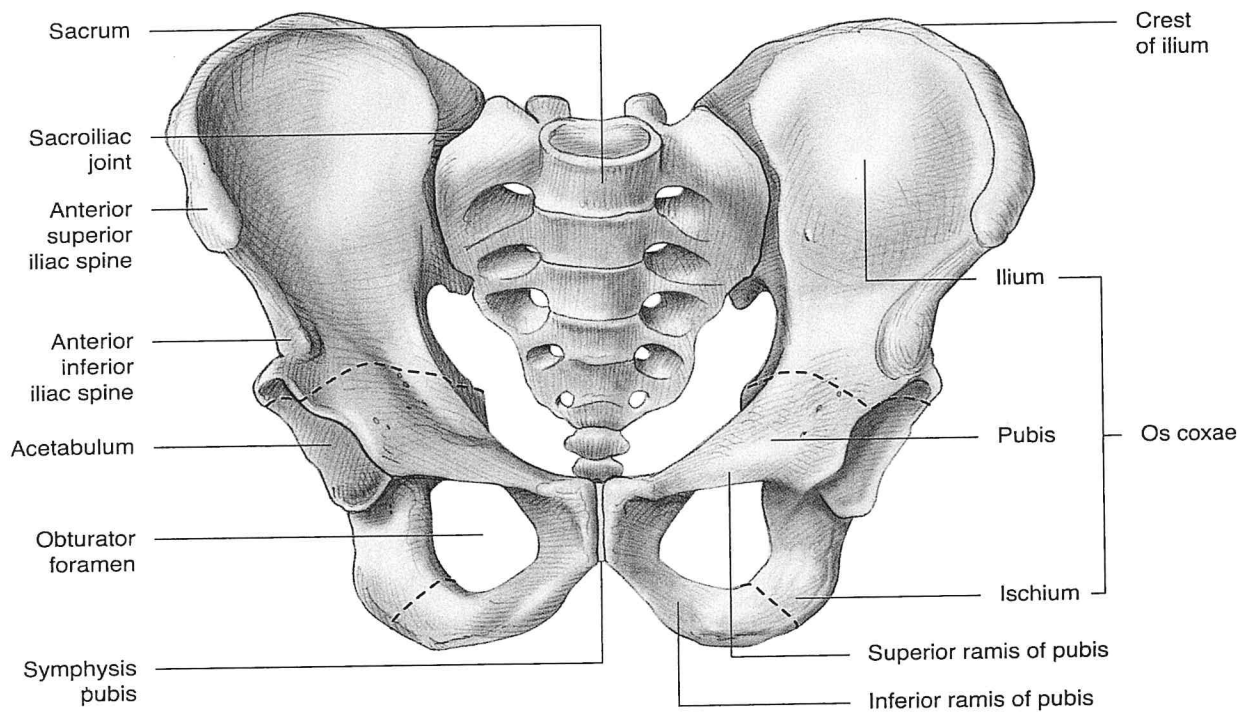


Figure 5.21 and Figure 5.22 Pelvis (male), anterior and posterior views.

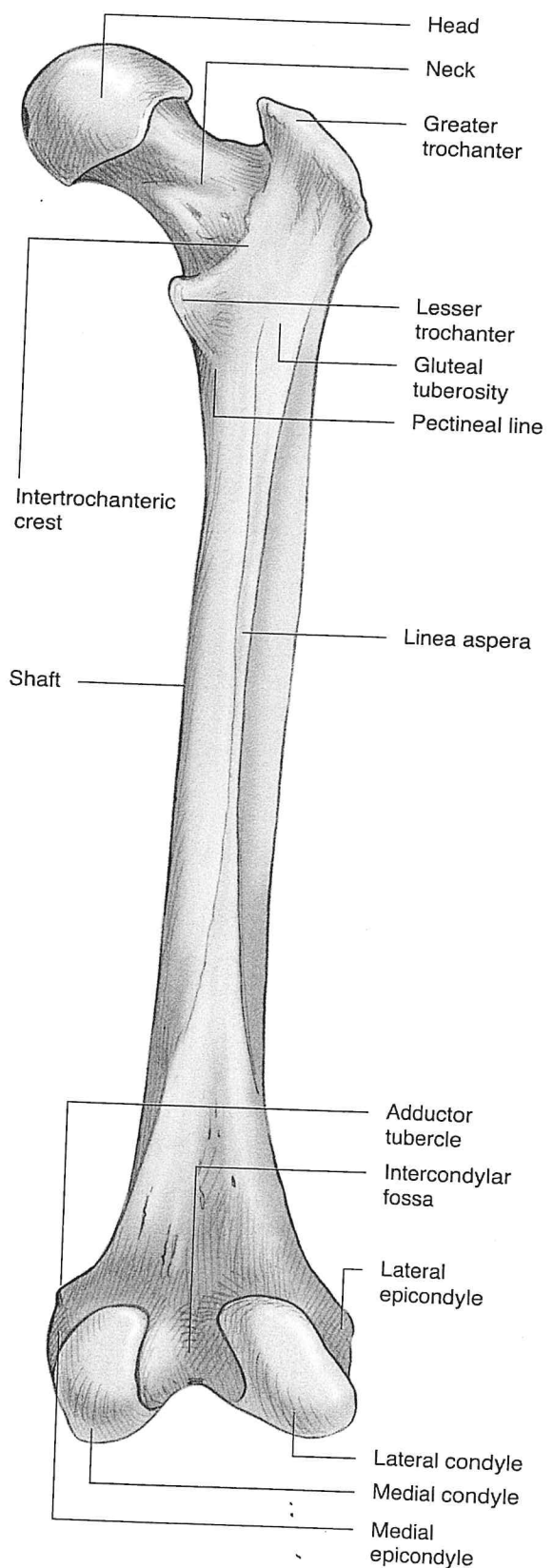
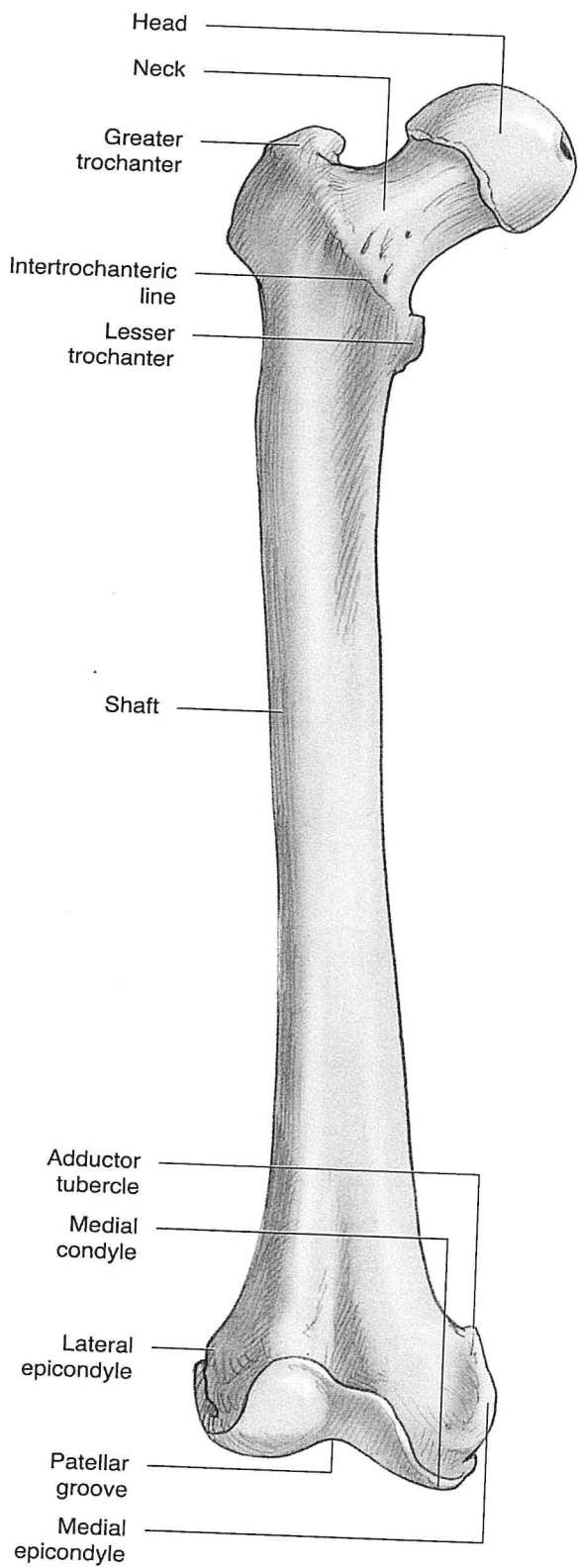


Figure 5.23 and Figure 5.24 Right femur, anterior and posterior views.

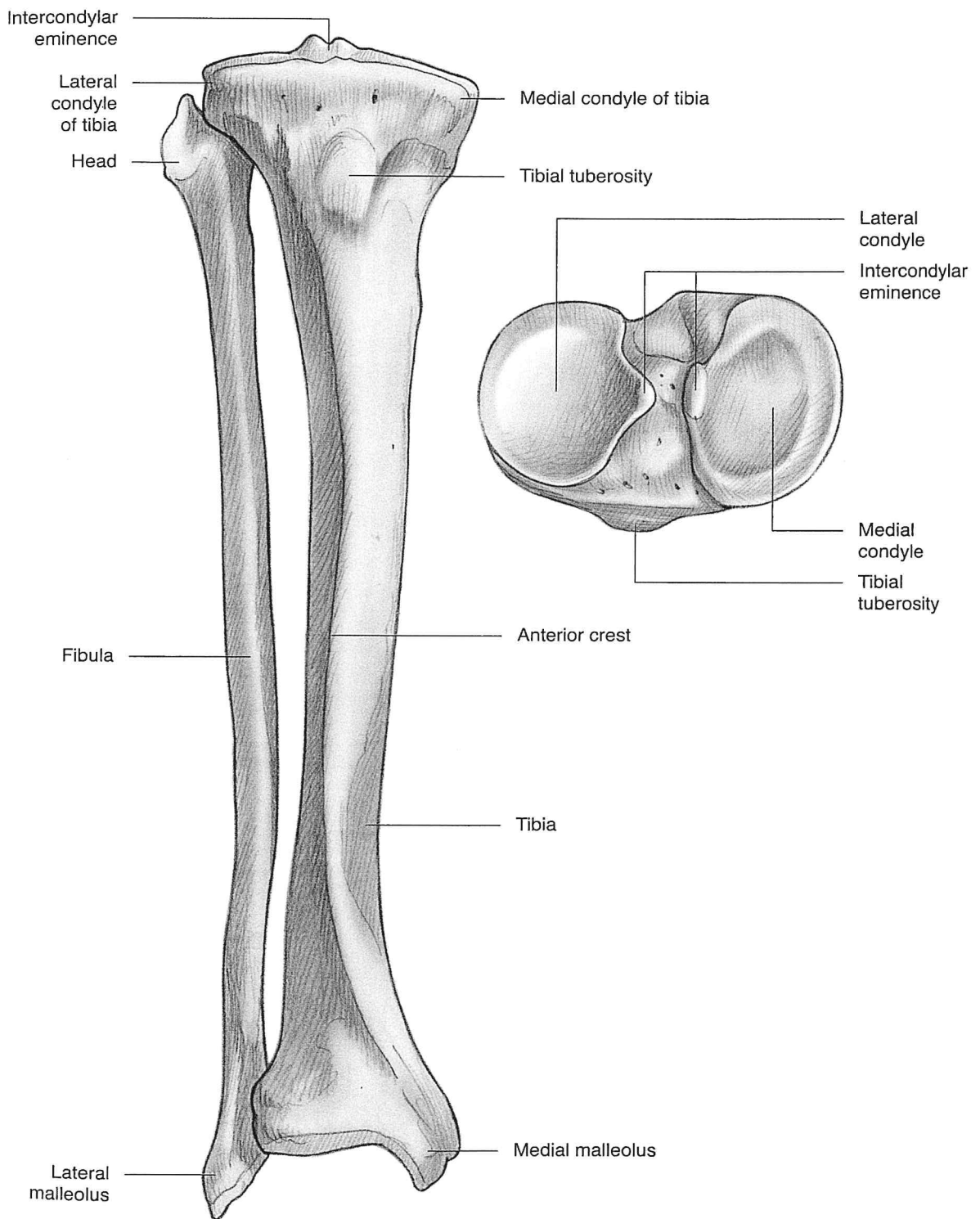


Figure 5.25 and Figure 5.26 Right fibula and tibia, anterior view; and tibial plateau, superior view.

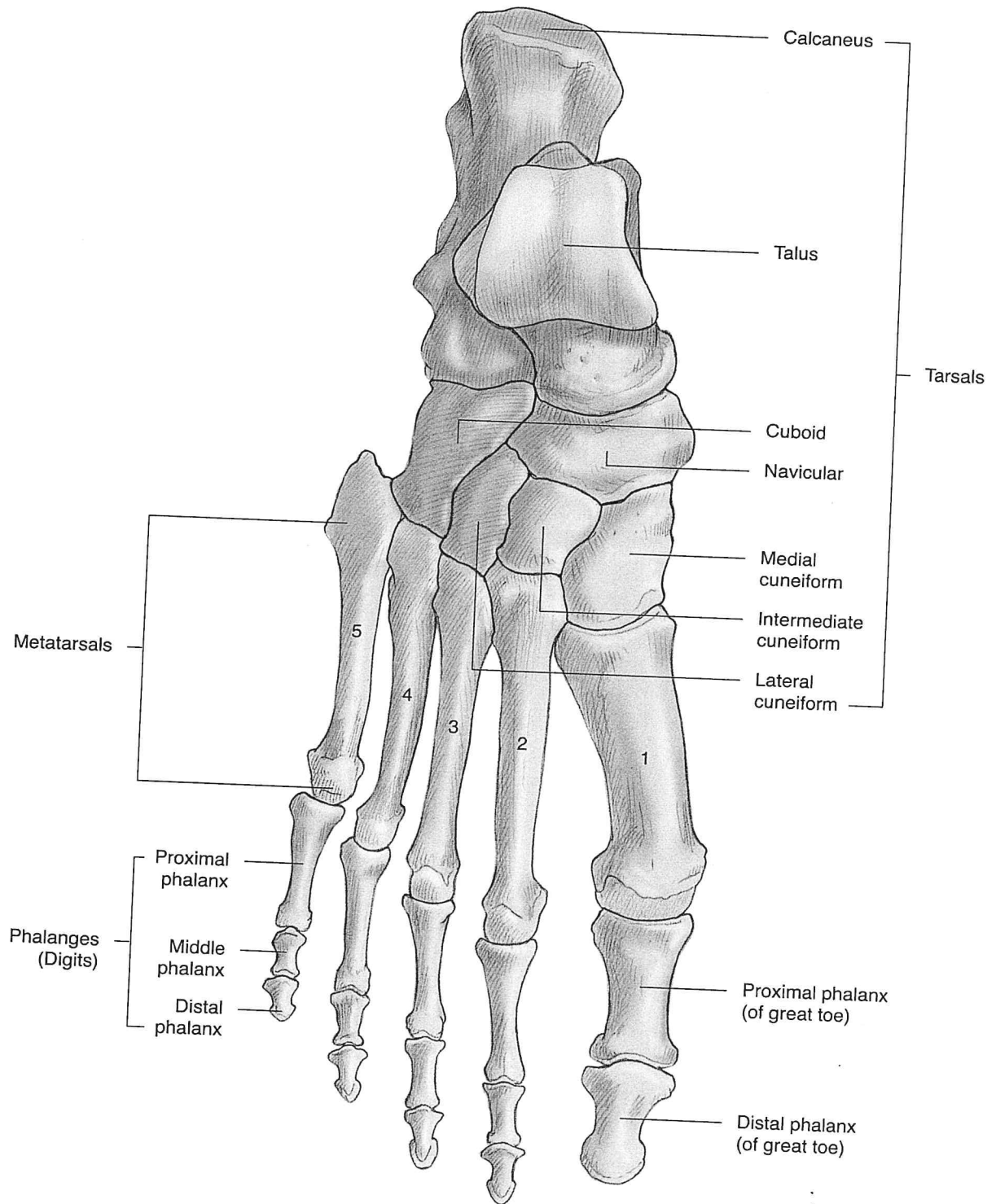


Figure 5.27 Right foot, superior view.

Table 5.2 Selected Bone Landmarks and Muscle Origins and Insertions

Bone	Important Landmarks	Muscles That Originate	Muscles That Insert
Vertebral column	cervical	levator scapulae, rhomboid minor, spinalis, longissimus, splenius, scalenus anterior and medius	splenius, spinalis
	thoracic	latissimus dorsi, rhomboid minor and major, spinalis, splenius, semispinalis capitis, longissimus	spinalis
	lumbar	diaphragm, latissimus dorsi, psoas major and minor, spinalis, longissimus	
Scapula	coracoid process	biceps brachii (short head), coracobrachialis	pectoralis minor
	acromion	deltoid	trapezius
	supraglenoid tubercle	biceps brachii (long head)	
	infraglenoid tubercle	triceps brachii (long head)	
	spine of scapula	deltoid	trapezius
	lateral border	teres minor, teres major	
	inferior angle		serratus anterior
	superior angle		levator scapulae
	medial border		serratus anterior, rhomboid major/minor, levator scapulae
	supraspinous fossa	supraspinatus	
	infraspinous fossa	infraspinatus	
subscapular fossa	subscapularis		
Humerus	greater tubercle		supraspinatus, infraspinatus, teres minor
	lesser tubercle		subscapularis
	intertubercular groove		latissimus dorsi, pectoralis major, teres major
	deltoid tuberosity		deltoid
	surface	(posterior) triceps brachii (medial and lateral head), (anterior) brachialis	(med.) coracobrachialis
	medial epicondyle	pronator teres, wrist and finger flexors	
lateral epicondyle	(upper) brachioradialis, anconeus, wrist and finger extensors, supinator		
Pelvic girdle	iliac crest	gluteus maximus, quadratus lumborum, tensor fasciae latae	external oblique, transversus abdominis
	sacrum	iliocostalis, latissimus dorsi, gluteus maximus, iliopsoas	
	anterior superior iliac spine	sartorius	
	anterior inferior iliac spine	rectus femoris	
	pubic crest	pectineus; adductor longus, brevis, and magnus; rectus abdominus	
	pubis	gracilis	
	ilium	iliacus, gluteus medius and minimus	
	ischial tuberosity	biceps femoris, adductor magnus, semitendinosus, semimembranosus	
Femur	surface	(ant.) vastus intermedius	
	greater trochanter	vastus lateralis	gluteus maximus, medius, and minimus
	lesser trochanter		psoas major, iliopsoas, pectineus
	medial condyle	gastrocnemius	
	lateral condyle	gastrocnemius, popliteus	semimembranosus
	adductor tubercle		adductor magnus
linea aspera	vastus lateralis and medialis, biceps femoris	adductor longus, brevis, magnus	