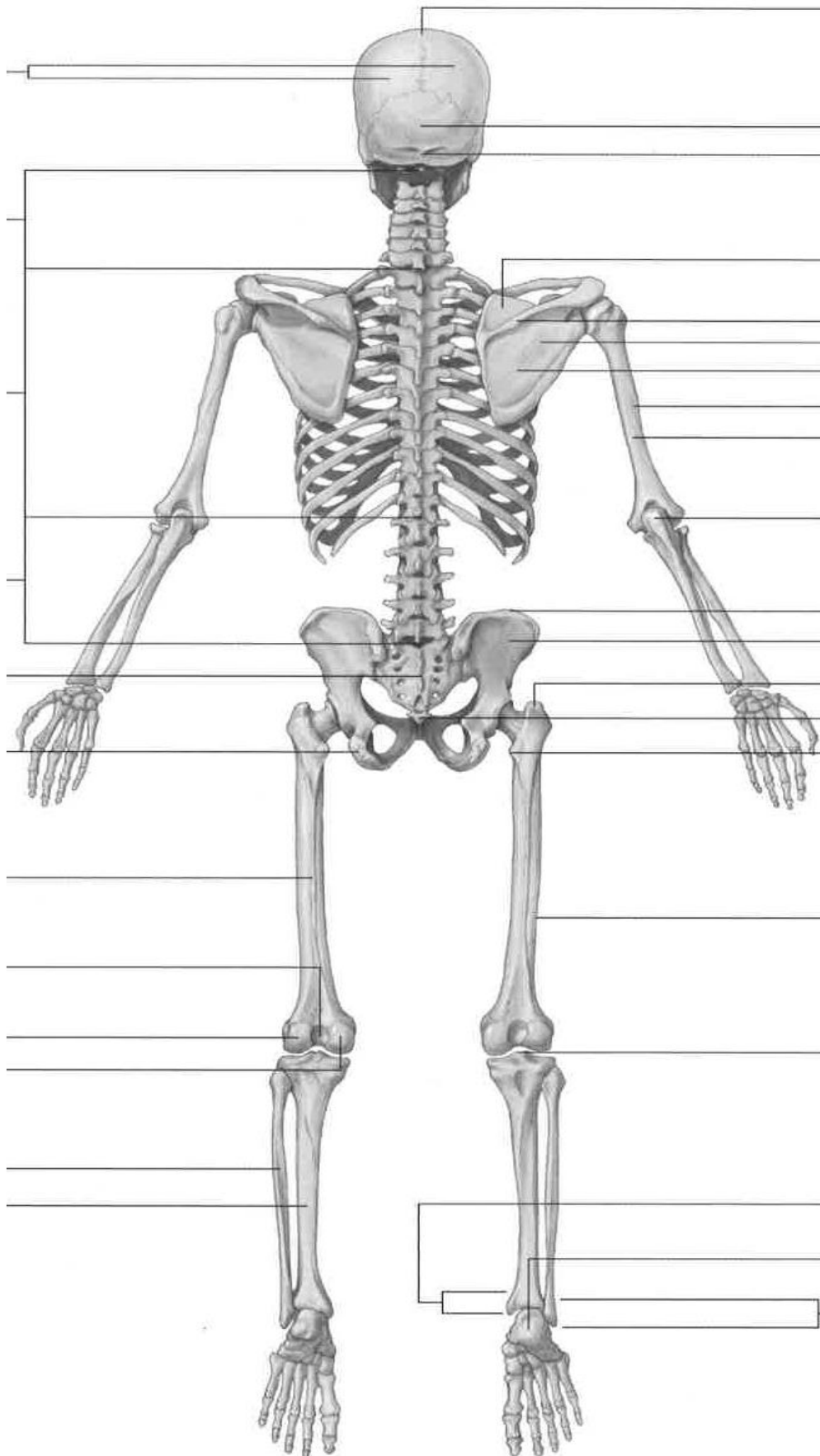
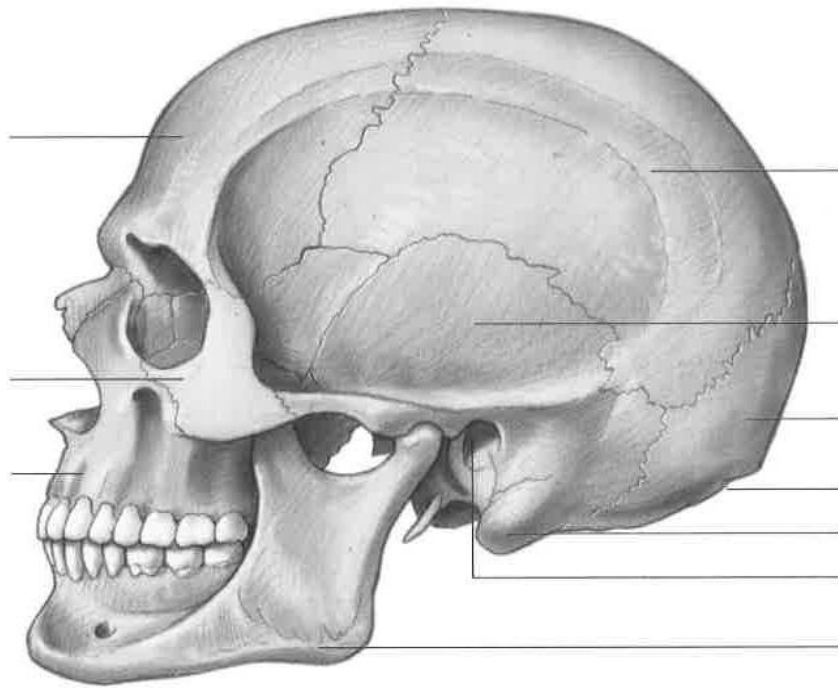
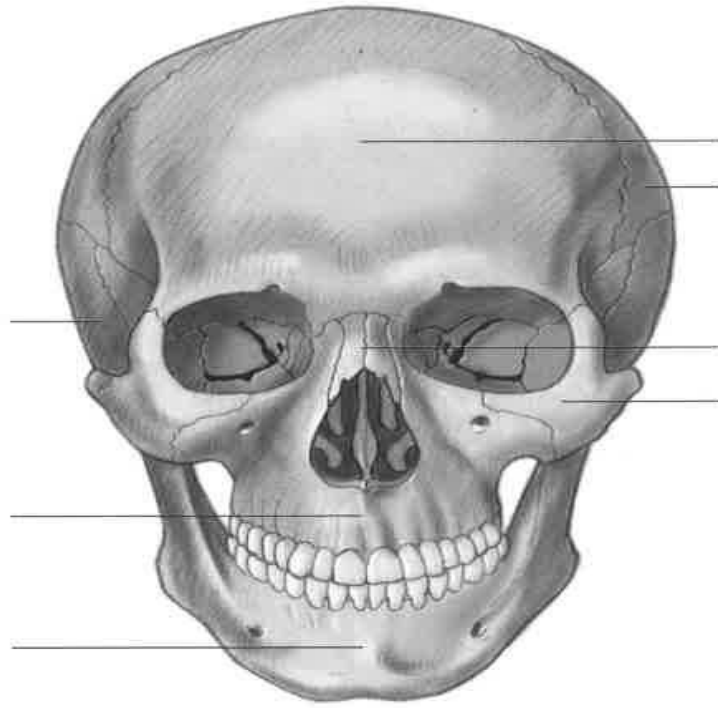


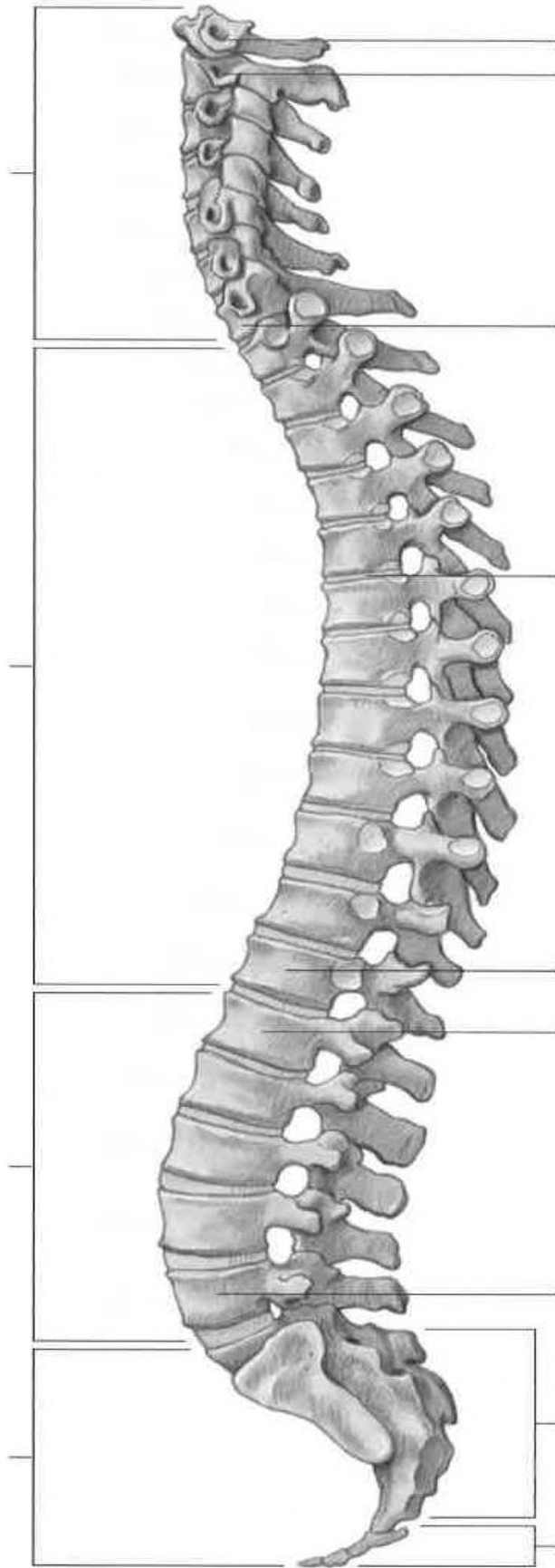
The human skeleton (anterior view)



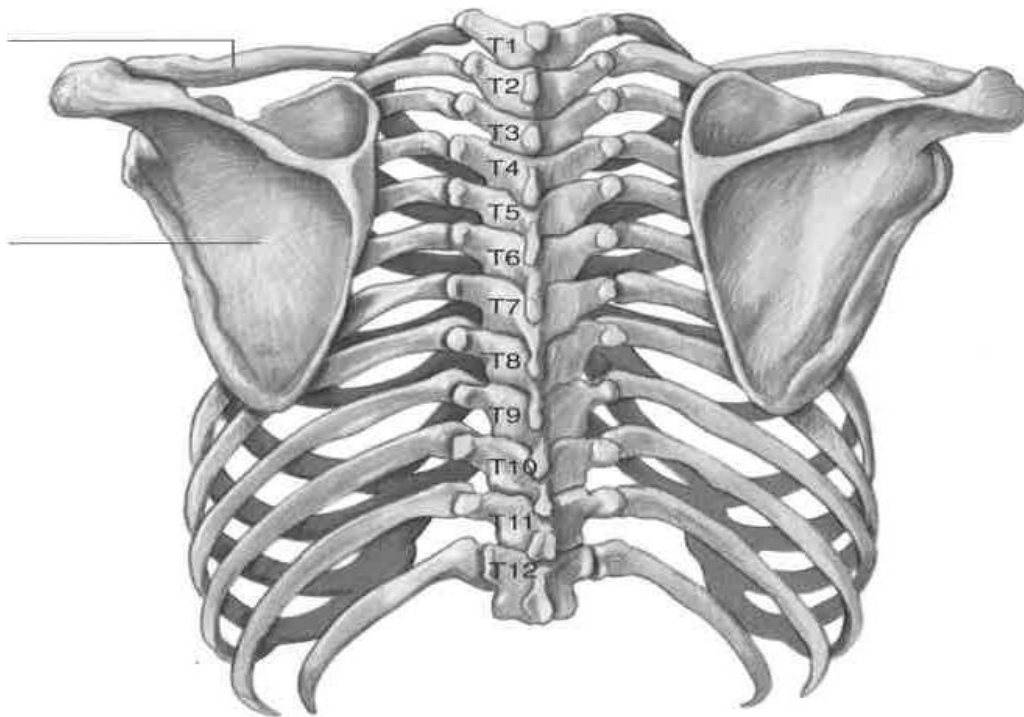
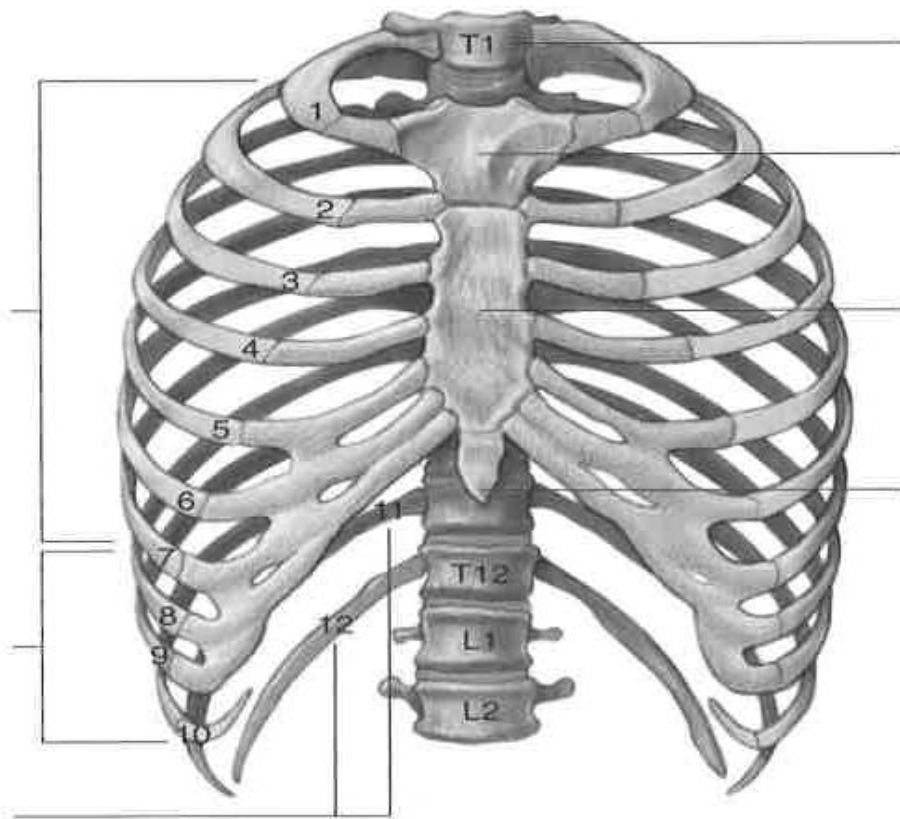
The human skeleton (posterior view)



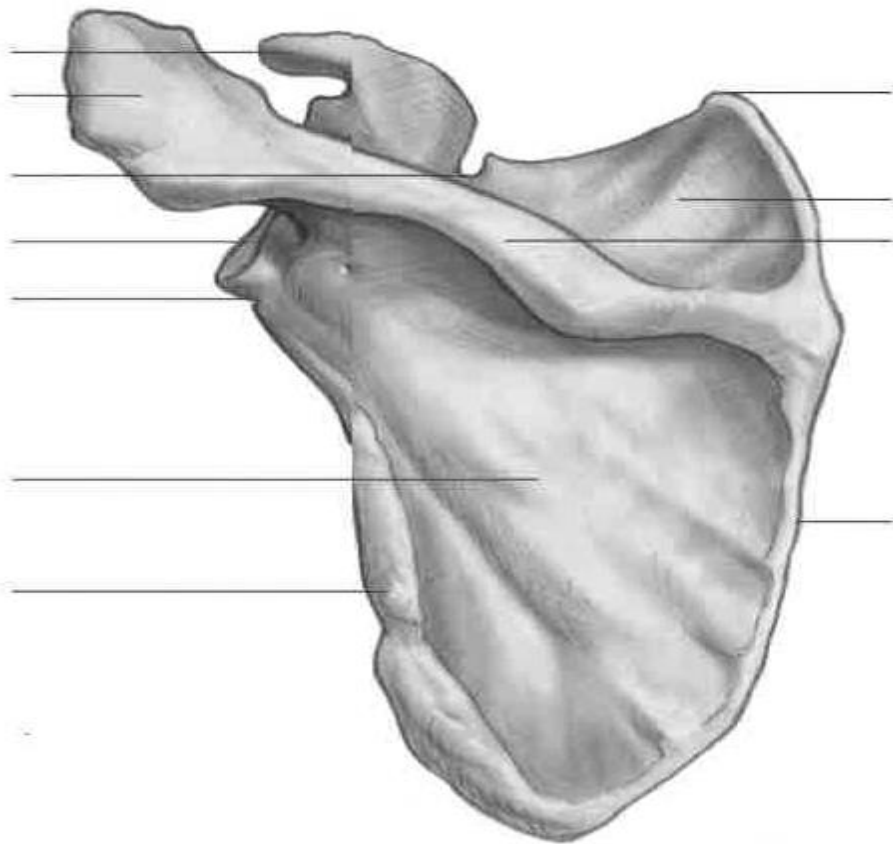
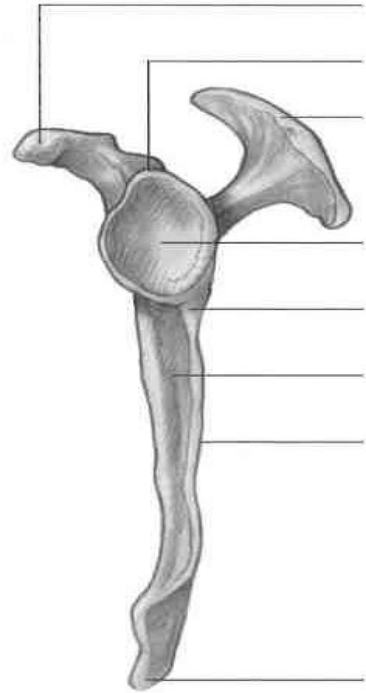
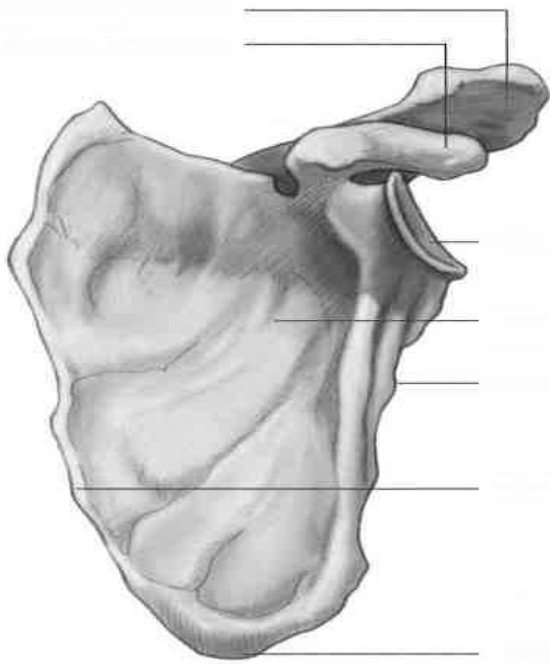
Bones of the skull, anterior and lateral views



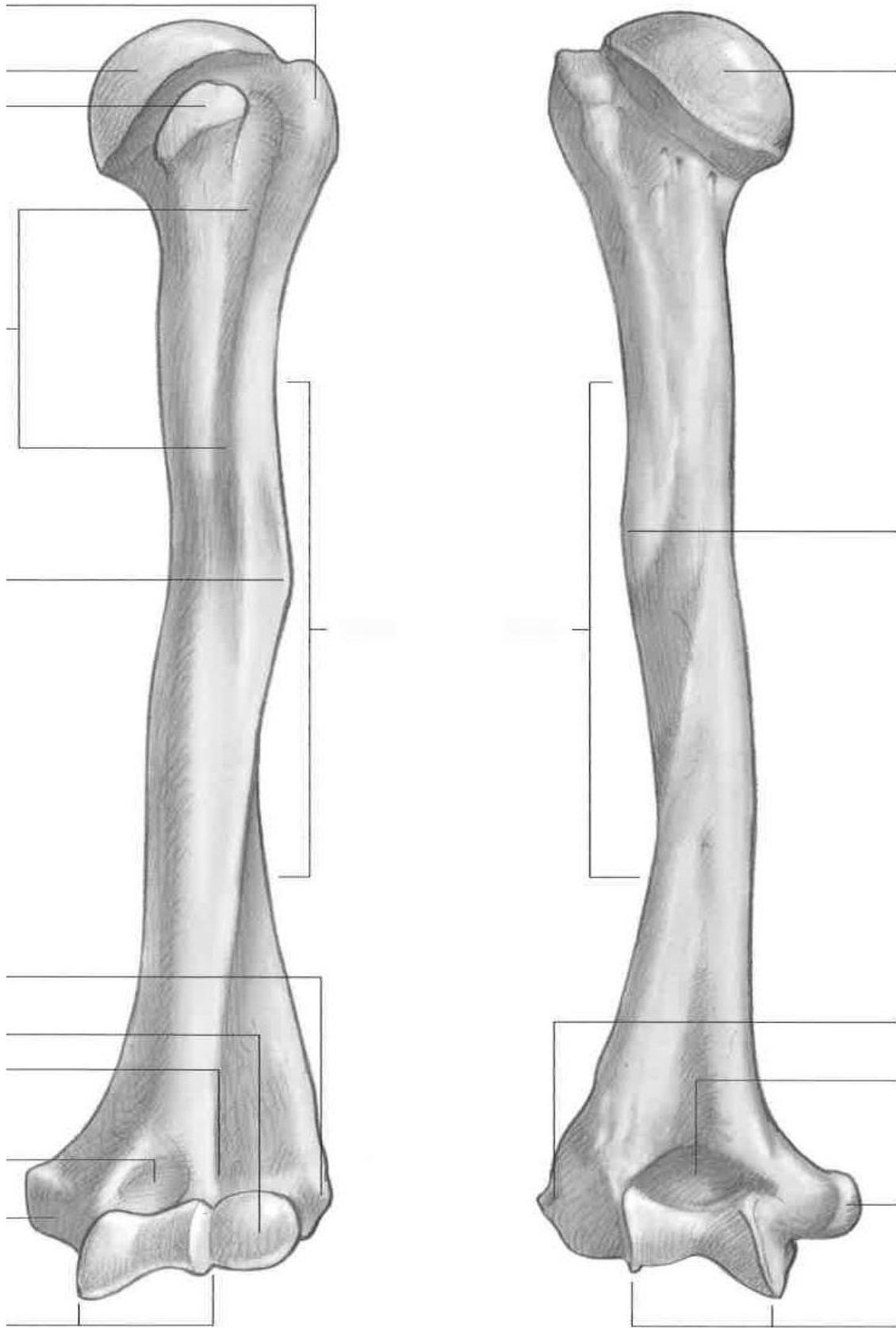
The vertebral column, lateral view



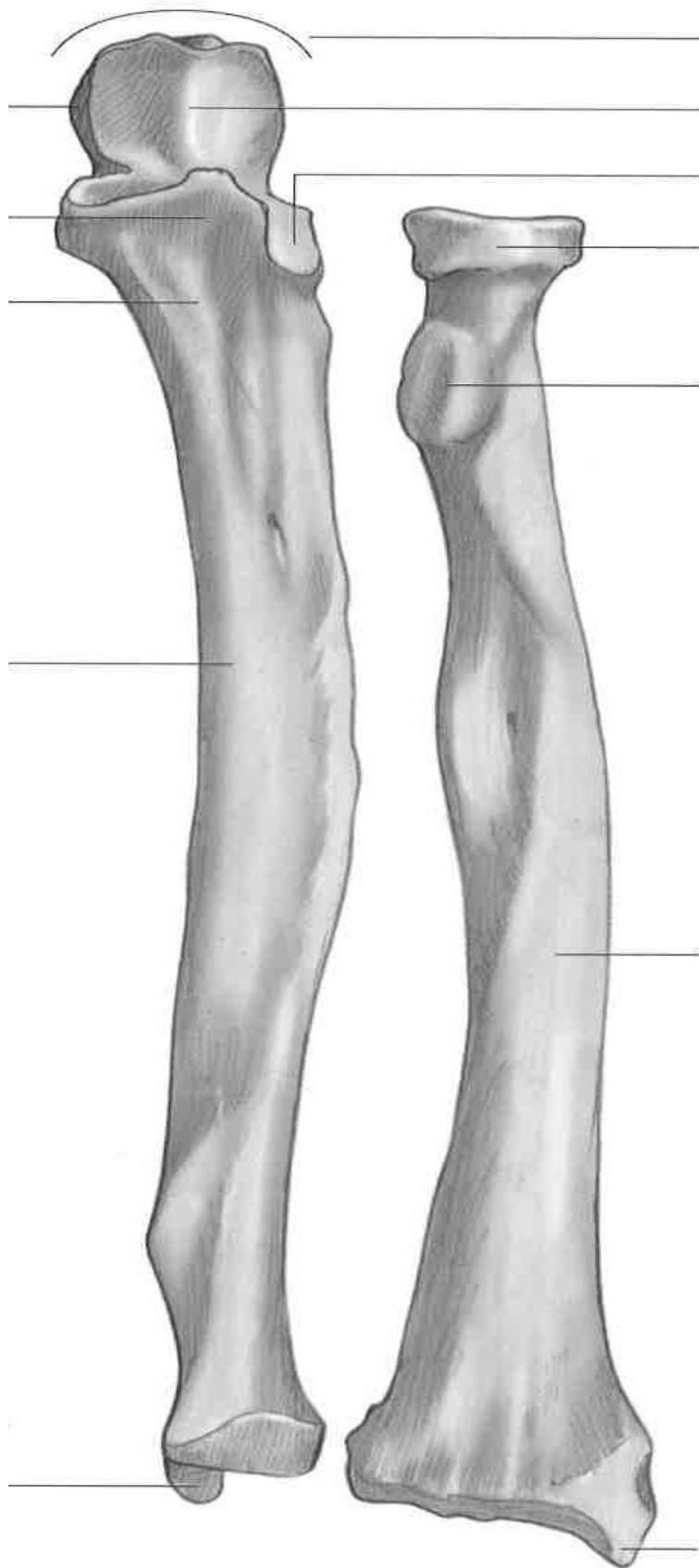
The thoracic cage, anterior and posterior views



Left scapula (top left), anterior view    Left scapula (top right), lateral view  
Left scapula (bottom), posterior view

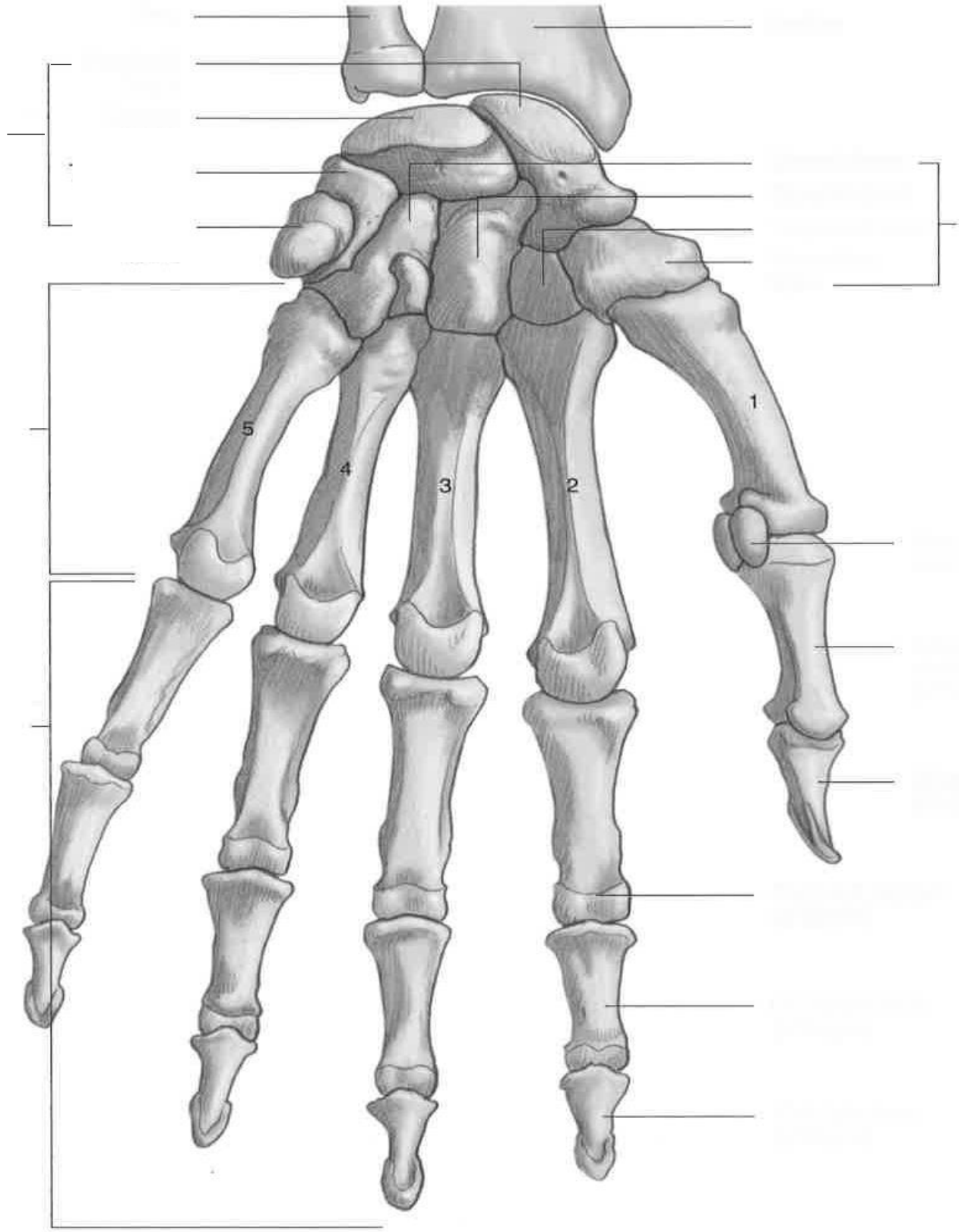


Left humerus, anterior and posterior view

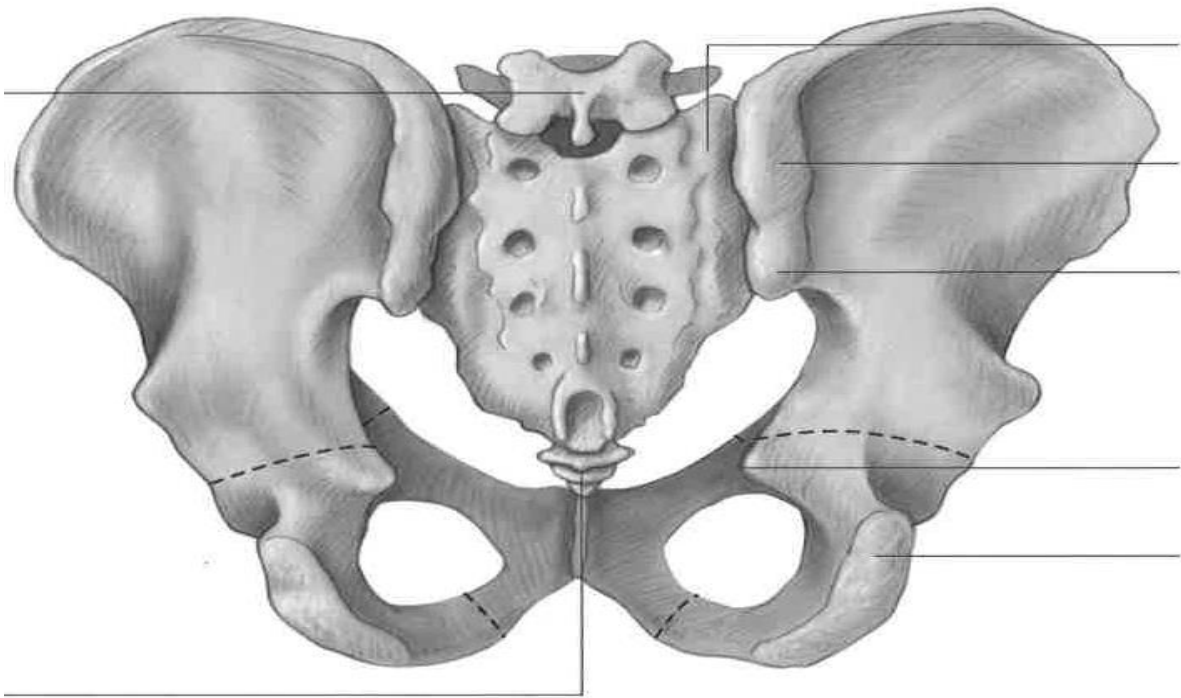
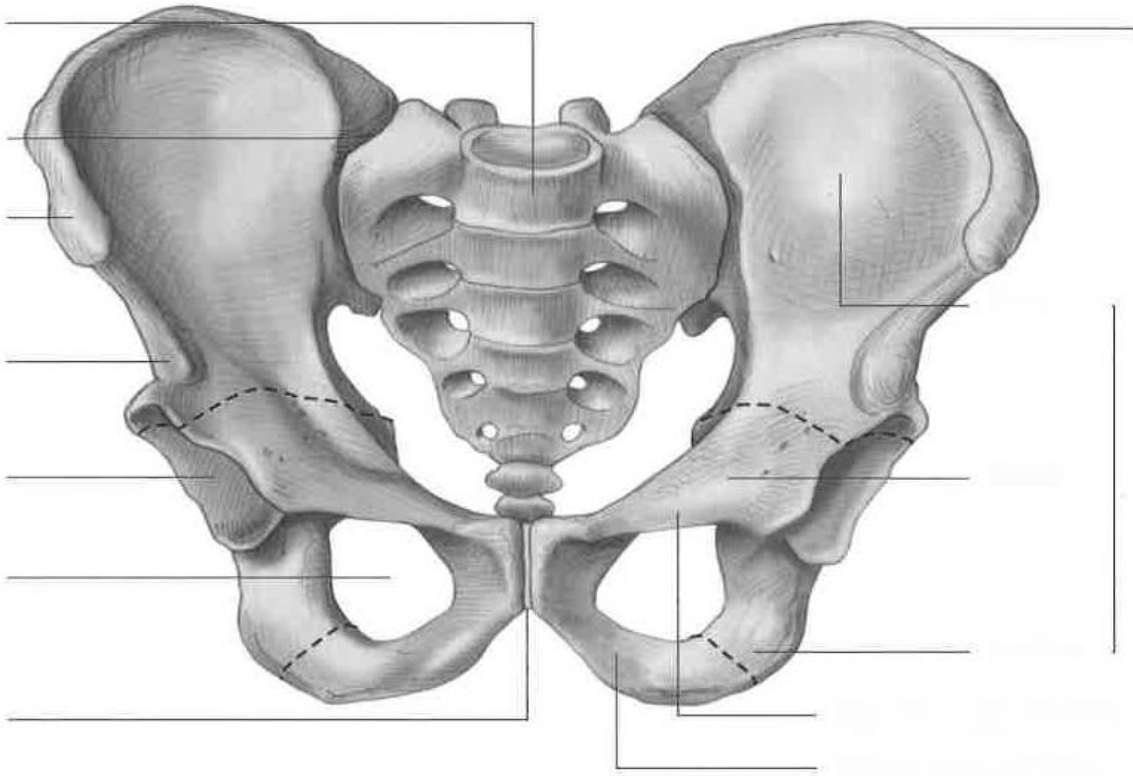


Left ulna and radius, anterior view

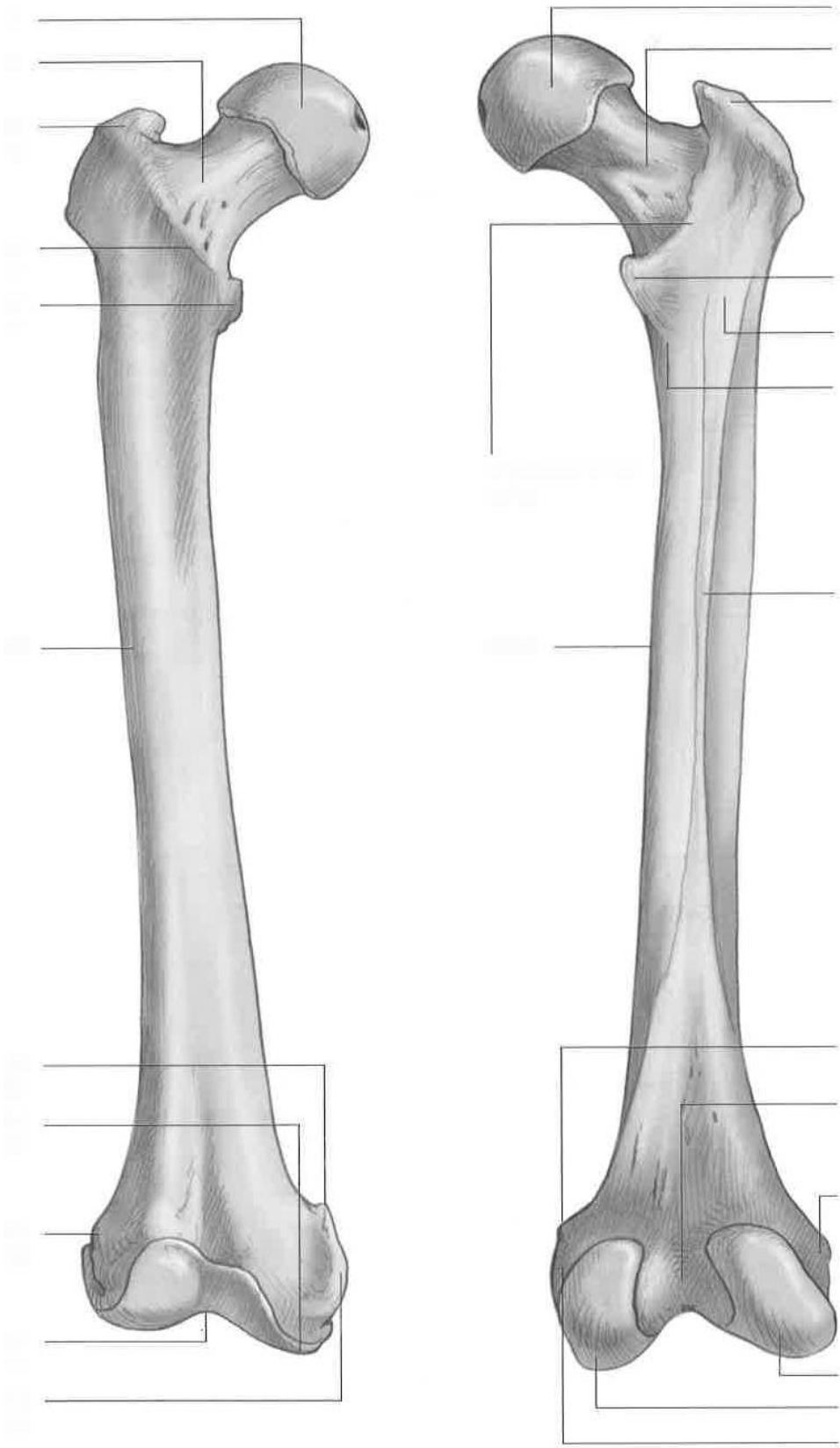




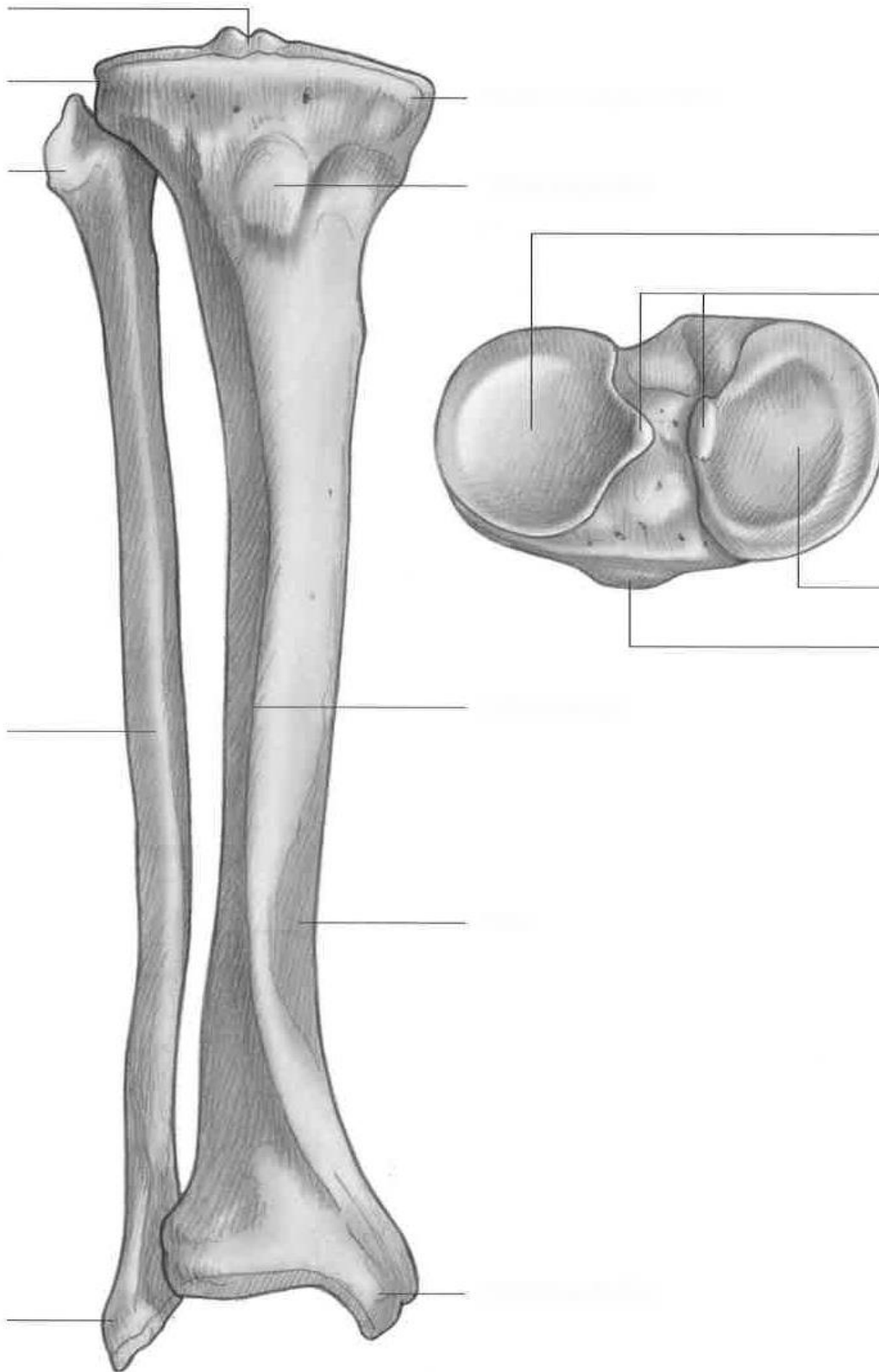
Left hand, anterior view



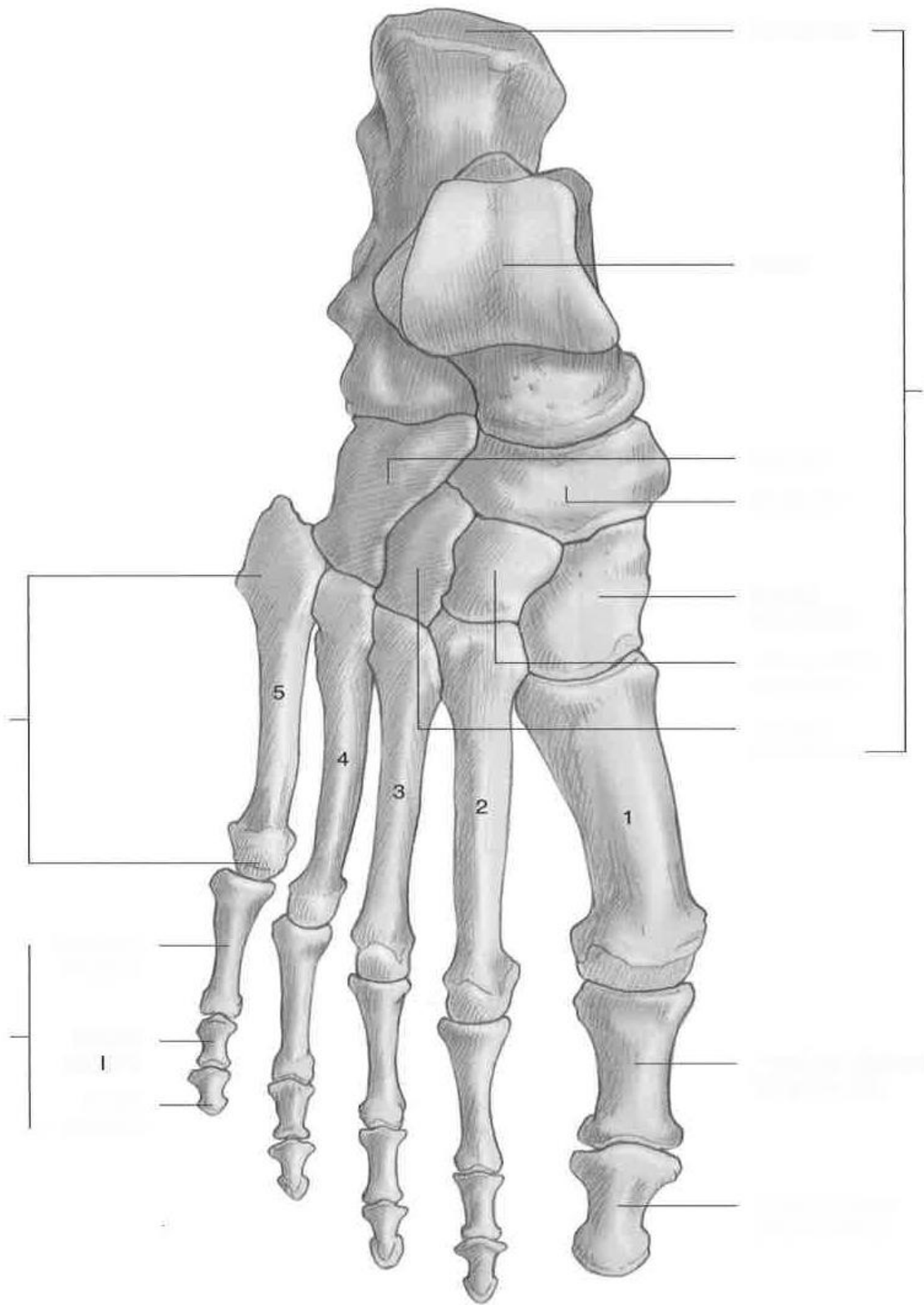
Pelvis (male), anterior and posterior views



Right femur, anterior and posterior views



Right fibula and tibia, anterior view and tibial plateau, superior view



Right foot, superior view